

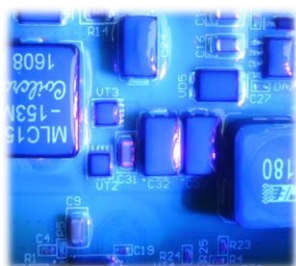
COATFLOW Solutions

Protecting your success

Mas INFO

CF440 LC STAND ALONE COATER AND DISPENSER SYSTEM

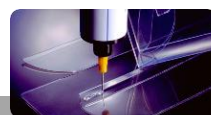
LOW-COST, EFFECTIVE SYSTEM FOR PERFORMING SELECTIVE COATING AND DISPENSING OPERATIONS AT THE ENTRY LEVEL



RELIABLE, ACCURATE AND EASY-MAINTENANCE SOLUTIONS FOR COATING AND DISPENSING

- ACCURATE 4 AND 5-AXIS ROBOTS (X, Y, Z, ROTATION AND TILT) PROVIDING MAXIMUM QUALITY FOR DISPENSING AND COATING OPERATIONS.
- COMPLETE ELIMINATION OF MASKING OPERATIONS, RESULTING IN SIGNIFICANT SAVINGS OF TIME AND COST, WHILE ACHIEVING HIGH EFFICIENCY AND REPEATABILITY IN PCBs PROTECTION.
- HIGH SPEED AND PRECISION IN CONFORMAL COATING AND DISPENSING.
- EASY TO USE PROGRAMMING SYSTEM WITH SPECIALIZED SOFT DESIGNED FOR LINES, DOTS, ARCS, CIRCLES, POLYLINES, AREAS, ETC.
- MULTI-BOARD PROGRAMMING CAPABILITY.
- HIGH RESOLUTION CAMERA TEACHING AND PROGRAMMING SYSTEM.
- **COATCONTROLPRO 20** CONTROL SOFTWARE, ENABLING FULL MANAGEMENT OF ALL DISPENSING AND COATING PARAMETERS ON SCREEN, INCLUDING LEVEL SENSORS, DOOR STATUS, CONVEYOR CONTROL, AND MORE.
- **PATHCOAT®** WINDOWS SOFTWARE, PROVIDING PRODUCTION OPTIMIZATION THROUGH AUTOMATIC PATH OPTIMIZATION AND CAD IMPORT FOR IMPROVED COATING PATTERNS.
- ALL PARTS ARE MADE OF STAINLESS STEEL AND ALUMINUM FOR EASY CLEANING AND EFFICIENT PROTECTION AGAINST SOLVENTS AND ANY AGGRESSIVE LIQUID.
- STAINLESS STEEL AND ALUMINUM CONSTRUCTION FOR EASY CLEANING AND RESISTANCE TO SOLVENTS AND AGGRESSIVE LIQUIDS.
- UV BLACK LIGHT FOR INSPECTION AND WHITE LED LIGHT FOR PROGRAMMING.
- FLEXIBLE, ROBUST AND PRECISE GANTRY SYSTEM WITH A BALL-SCREW MOTION AND SERVO MOTORS ENSURING LONG-TERM RELIABILITY.
- WIDE RANGE OF VALVES AVAILABLE FOR COATING, GASKETING, FILLING, AND OTHER DISPENSING APPLICATIONS.

CONFORMAL COATINGS, ACRYLICS, URETHANES, SILICONES, RTV, BI-COMPONENT MATERIALS, ETC.



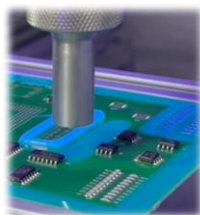
SELECTIVE CONFORMAL COATING AND DISPENSING SOLUTIONS

CF440 LC VALVES RANGE

RELIABLE, ACCURATE AND EASY-MAINTENANCE SOLUTIONS

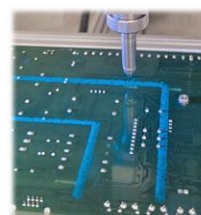
OUR EXCLUSIVE VALVE RANGE MEETS ALL REQUIREMENTS FOR DISPENSING CONFORMAL COATINGS AND ADHESIVES IN THE ELECTRONICS INDUSTRY.

APPLICATIONS INCLUDE:



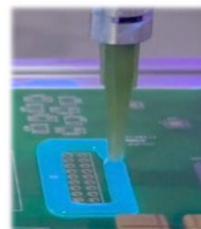
SELECTIVE COATING

PRECISION SPRAY TECH
PRECISION MICRO SPRAY TECH



SELECTIVE COATING

NEEDLE COATING
NEEDLE DAM AND FILL
NEEDLE GASKETING



PRECISION HIGH VISCOSITY SOLDER PASTES AND ADHESIVES

ROTARY DISPENSING
CAVITY PUMP DISPENSING



SPECIFIC ELECTRONICS PROCESS

UNDERFILLING
DAM AND FILL
POTTING



THIXOTROPIC MATERIALS

GASKETING
DAM AND FILL



CONFORMAL COATINGS, ACRYLICS, URETHANES, SILICONES, RTV, BI-COMPONENT MATERIALS, ETC.



SELECTIVE CONFORMAL COATING AND DISPENSING SOLUTIONS

CF440 LC STAND ALONE COATER AND DISPENSER SYSTEM

GENERAL SPECIFICATIONS INCLUDED

MOTION:

- BALL SCREW DRIVEN BY SERVO MOTORS
- X, Y SPEED: MAX 600 MM/SG
- Z SPEED: MAX 400 MM/SG
- POSITIONAL ACCURACY: 0.005 MM
- POSITIONAL PRECISION: 0.01 MM

WORKING AREA:

- STANDARD 450X450X100 MM FOR 1 VALVE
- *WITH PURGE AND PARK CUPS 440X400 MM

BOARDS SUPPORT

- ADJUSTABLE FIXTURE
- COMPONENT CLEARANCE UP TO 80 MM (BELOW AND ABOVE) IF AUTO DRAWER INSTALLED BELOW CLEARANCE CAN BE REDUCED

CONTROL

- PROGRAMMING TEACH PENDANT INCLUDED

SOFTWARE

- PATHCOAT ® OFFLINE **NOT INCLUDED**

ACCESSORIES INCLUDED

- AUTOMATIC PARK AND PURGE SYSTEM
- AUTOMATIC CONTROL OF VALVE PARAMETERS
- THREE-COLOURS AND BUZZER LIGHT TOWER
- 2 LITRES PRESSURE TANK WITH LOW LEVEL SENSOR
- 6 OZ-CARTRIDGE
- SYRINGES ADAPTER 30 AND 55 CC

VALVES CONFIGURATION

- MAIN VALVE: PRECISION SPRAY/MICROSPRAY/NEEDLE AS STANDARD
- ADDITIONAL EXTENDED VALVE NON MOUNTED AS OPTION.

POWER SUPPLY

- 110/230V 1 PHASE. 10A MAX

SECURITY

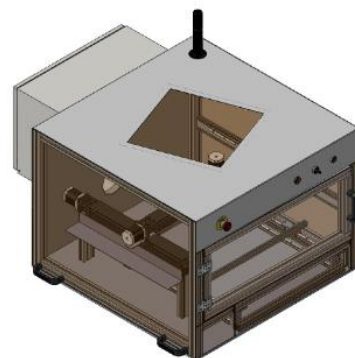
- EMERGENCY BUTTON
- SECURITY INTERLOCKS IN DOOR
- SPRAY SENSOR CONTROL

CERTIFICATION

- CE & SMEMA

OPTIONAL EQUIPMENT

- 4-AXIS 'TILT' 2 OR 3 POSITIONS FOR DISPENSING IN ANGLE
- AUTOMATIC LOADING/UNLOADING SYSTEM FOR BOARDS
- OFFLINE SOFTWARE **PATHCOAT®**
- WIDE RANGE OF VALVES DEPENDING ON YOUR PROCESS
- PRESSURE TANKS (FROM 2 TO 30 LITRES)
- CARTRIDGE RETAINER (2.5, 6, 8, 12 AND 20 OZ)
- LOW LEVEL SENSOR FOR TANKS AND CARTRIDGES
- SYRINGES ADAPTER (3, 5, 10, 30 AND 55 CC)



CoatFlow

AN INNOMELT BRAND

COATFLOW Solutions

Protecting your success

Más INFO

INNOMELT Spain