

COATFLOW Solutions

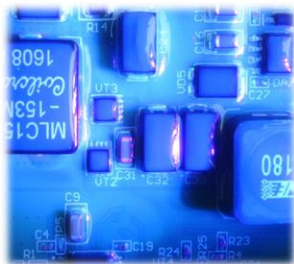
Protecting your success

Mas INFO

CF440 LC STAND ALONE COATER AND DISPENSER SYSTEM

TABLE TOP, EFFECTIVE SYSTEM FOR PERFORMING SELECTIVE COATING AND DISPENSING OPERATIONS WITH MAXIMUM PRECISION

RELIABLE, ACCURATE AND EASY-MAINTENANCE SOLUTIONS FOR COATING AND DISPENSING



- ACCURATE 4 AND 5-AXIS ROBOTS (X, Y, Z, ROTATION AND TILT) PROVIDING MAXIMUM QUALITY FOR DISPENSING AND COATING OPERATIONS.
- COMPLETE ELIMINATION OF MASKING OPERATIONS, RESULTING IN SIGNIFICANT SAVINGS OF TIME AND COST, WHILE ACHIEVING HIGH EFFICIENCY AND REPEATABILITY IN PCBs PROTECTION.
- HIGH SPEED AND PRECISION IN CONFORMAL COATING AND DISPENSING.
- EASY TO USE PROGRAMMING SYSTEM WITH SPECIALIZED SOFTWARE DESIGNED FOR LINES, DOTS, ARCS, CIRCLES, POLY LINES, AREAS, ETC.
- MULTI-BOARD PROGRAMMING CAPABILITY.
- OPTIONAL HIGH RESOLUTION CAMERA TEACHING AND PROGRAMMING SYSTEM.
- **COATCONTROLPRO 2.0** CONTROL SOFTWARE, ENABLING FULL MANAGEMENT OF ALL DISPENSING AND COATING PARAMETERS ON SCREEN, INCLUDING LEVEL SENSORS, DOOR STATUS, CONVEYOR CONTROL, AND MORE.
- **PATHCOAT** WINDOWS SOFTWARE, PROVIDING PRODUCTION OPTIMIZATION THROUGH AUTOMATIC PATH OPTIMIZATION AND CAD IMPORT FOR IMPROVED COATING PATTERNS.
- OPTIONAL FLOW METER MODULE FOR REAL-TIME MONITORING OF DISPENSED MATERIAL VOLUME.
- OPTIONAL TRACEABILITY MODULE WITH 1D AND 2D BARCODE RECOGNITION (QR, DATAMATRIX, ETC.).
- FIDUCIAL MARK RECOGNITION SYSTEM TO RECALCULATE X AND Y POSITIONS DURING DISPENSING OPERATIONS.
- OPTION SENSORS SUCH AS "COATING WIDTH MEASUREMENT", OR "WARPAGE MEASUREMENT", AVAILABLE UPON REQUEST.
- STAINLESS STEEL AND ALUMINUM CONSTRUCTION FOR EASY CLEANING AND RESISTANCE TO SOLVENTS AND AGGRESSIVE LIQUIDS.
- UV BLACK LIGHT FOR INSPECTION AND WHITE LED LIGHT FOR PROGRAMMING.
- FLEXIBLE, ROBUST AND PRECISE GANTRY SYSTEM WITH A BALL-SCREW MOTION AND SERVO MOTORS ENSURING LONG-TERM RELIABILITY.
- WIDE RANGE OF VALVES AVAILABLE FOR COATING, GASKETING, FILLING, AND OTHER DISPENSING APPLICATIONS.

CONFORMAL COATINGS, ACRYLICS, URETHANES, SILICONES, RTV, BI-COMPONENT MATERIALS, ETC.



CoatFlow

www.coatflow.com

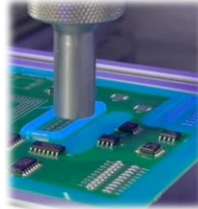
SELECTIVE CONFORMAL COATING AND DISPENSING SOLUTIONS

CF440 LC VALVES RANGE

RELIABLE, ACCURATE AND EASY-MAINTENANCE SOLUTIONS

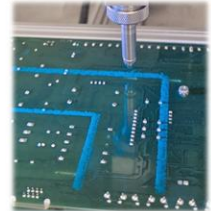
OUR EXCLUSIVE VALVE RANGE MEETS ALL REQUIREMENTS FOR DISPENSING CONFORMAL COATINGS AND ADHESIVES IN THE ELECTRONICS INDUSTRY.

APPLICATIONS INCLUDE:



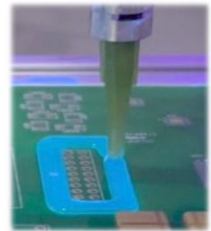
SELECTIVE COATING

PRECISION SPRAY TECH
PRECISION MICRO SPRAY TECH



SELECTIVE COATING

NEEDLE COATING
NEEDLE DAM AND FILL
NEEDLE GASKETING



PRECISION HIGH VISCOSITY SOLDER PASTES AND ADHESIVES

ROTARY DISPENSING
CAVITY PUMP DISPENSING



SPECIFIC ELECTRONICS PROCESS

UNDERFILLING
DAM AND FILL
POTTING



THIXOTROPIC MATERIALS

GASKETING
DAM AND FILL
JETTING



CONFORMAL COATINGS, ACRYLICS, URETHANES, SILICONES, RTV, BI-COMPONENT MATERIALS, ETC.



SELECTIVE CONFORMAL COATING AND DISPENSING SOLUTIONS

CF440 STAND ALONE COATER AND DISPENSER SYSTEM

GENERAL SPECIFICATIONS INCLUDED

MOTION:

- BALL SCREW DRIVEN BY SERVO MOTORS
- X, Y SPEED: 0 TO 900 MM/SG
- Z SPEED: 0 TO 900 MM/SG
- POSITIONAL ACCURACY: 0.005 MM
- POSITIONAL PRECISION: 0.01 MM

WORKING AREA:

- STANDARD FOR 1 VALVE 500X500X100 MM (WITH PURGE AND PARK CUPS 500X465 MM)
- FOR 2 OR 3 VALVES IT IS NECESSARY CONFIRMATION ABOUT FINAL WORKING AREA. IT IS DEPENDING OF VALVES MODEL AND OPTIONS INSTALLED.
- WITH TEACHING CAMERA THE PROGRAMMING AREA IS REDUCED DEPENDING ON THE VALVE CONFIGURATION (ASK ABOUT FINAL AREA)

PCBS SUPPORT

- ADJUSTABLE FIXTURE FOR BOARDS
- COMPONENT CLEARANCE UP TO 60 MM (BELOW AND ABOVE). IF AUTO DRAWER INSTALLED BELOW CLEARANCE LESS THAN 50 MM

CONTROL

- LAPTOP PC (WINDOWS 11 INCLUDED)

SOFTWARE

- COATCONTROL PRO 2.X ⑥ INCLUDED
- PATHCOAT ⑥ OFFLINE (OPTIONAL)

ACCESSORIES INCLUDED

- AUTOMATIC PARK AND PURGE SYSTEM
- AUTOMATIC CONTROL OF VALVE PARAMETERS
- 4TH-AXIS TILT IN NEEDLE OR MICROSPRAY VALVE
- THREE-COLOURS AND BUZZER LIGHT TOWER
- 5 LITERS STAINLESS STEEL PRESSURE TANK WITH LOW LEVEL SENSOR
- 6 OZ-CARTRIDGE FOR PURGING SYSTEM
- SYRINGES ADAPTER 30 AND 55 CC

VALVES CONFIGURATION

- UP TO 6 VALVES: PRECISION SPRAY, MICROSPRAY, NEEDLE, JET, CAVITY PUMP, ROTARY, ETC.

POWER SUPPLY

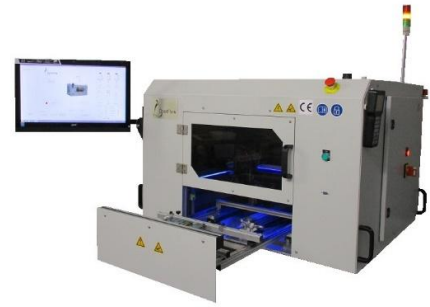
- 110/230V 1 PHASE. 10A MAX

SECURITY

- EMERGENCY BUTTON
- SECURITY INTERLOCKS IN DOORS
- EXHAUST PUMP SENSOR
- SPRAY SENSOR CONTROL

CERTIFICATION

- CE & SMEMA



OPTIONAL EQUIPMENT

- 5TH-AXIS ROTATION IN HEAD
- PROGRAMMABLE MARK FIDUCIAL SYSTEM
- TEACHING CAMERA
- BENCH FOR STAND ALONE SYSTEM
- AUTOMATIC LOADING/UNLOADING SYSTEM (DRAWER) FOR BOARDS
- **FLOW METER** IN VALVES
- TRACEABILITY MODULE. BARCODE READER (CAM) QR, DATAM, ETC.
- SELECTION AND AUTOMATIC LOADING OF PROGRAM ACCORDING TO CODE (DATAMATRIX, QR, 2D, ETC)
- HEATING SYSTEM IN TANKS AND HOSES
- AUTOMATIC NEEDLE CALIBRATION. X, Y AND Z
- PRECISION WEIGHT CONTROL SYSTEM
- VALVES DUPLICATION FOR LOWER CYCLE TIME
- SOFTWARE AVAILABLE IN LOCAL LANGUAGES
- PRESSURE TANKS (FROM 2 TO 30 LITRES)
- CARTRIDGE RETAINER (2.5, 6, 8, 12 AND 20 OZ)
- LOW LEVEL SENSOR FOR TANKS AND CARTRIDGES. SCALE TYPE
- SYRINGES ADAPTER (3, 5, 10, 30 AND 55 CC)

CoatFlow

AN INNOMELT BRAND

COATFLOW Solutions

Protecting your success

Más INFO

INNOMELT Spain