

COATFLOW Solutions

Protecting your success

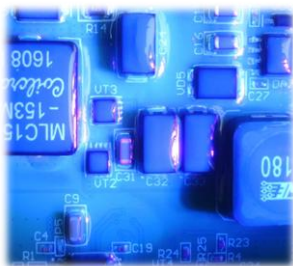
Mas INFO

CF3951L IN LINE COATER AND DISPENSER SYSTEM

INLINE EFFECTIVE SYSTEM FOR SELECTIVE COATING AND DISPENSING OPERATIONS WITH MAXIMUM PRECISION

RELIABLE, ACCURATE AND EASY-MAINTENANCE SOLUTIONS FOR COATING AND DISPENSING

- ACCURATE 4 AND 5-AXIS ROBOTS (X, Y, Z, ROTATION AND TILT) PROVIDING MAXIMUM QUALITY FOR DISPENSING AND COATING OPERATIONS.
- COMPLETE ELIMINATION OF MASKING OPERATIONS, RESULTING IN SIGNIFICANT SAVINGS OF TIME AND COST, WHILE ACHIEVING HIGH EFFICIENCY AND REPEATABILITY IN PCBs PROTECTION.
- HIGH SPEED AND PRECISION IN CONFORMAL COATING AND DISPENSING.
- EASY TO USE PROGRAMMING SYSTEM WITH SPECIALIZED SOFTWARE DESIGNED FOR LINES, DOTS, ARCS, CIRCLES, POLYLINES, AREAS, ETC.
- MULTI-BOARD PROGRAMMING CAPABILITY.
- HIGH RESOLUTION CAMERA TEACHING AND PROGRAMMING SYSTEM.
- **COATCONTROLPRO 2.0** CONTROL SOFTWARE, ENABLING FULL MANAGEMENT OF ALL DISPENSING AND COATING PARAMETERS ON SCREEN, INCLUDING LEVEL SENSORS, DOOR STATUS, CONVEYOR CONTROL, AND MORE.
- **PATHCOAT** WINDOWS SOFTWARE, PROVIDING PRODUCTION OPTIMIZATION THROUGH AUTOMATIC PATH OPTIMIZATION AND CAD IMPORT FOR IMPROVED COATING PATTERNS.
- OPTIONAL FLOW METER MODULE FOR REAL-TIME MONITORING OF DISPENSED MATERIAL VOLUME.
- OPTIONAL TRACEABILITY MODULE WITH 1D AND 2D BARCODE RECOGNITION (QR, DATAMATRIX, ETC.).
- FIDUCIAL MARK RECOGNITION SYSTEM TO RECALCULATE X AND Y POSITIONS DURING DISPENSING OPERATIONS.
- OPTION SENSORS SUCH AS "COATING WIDTH MEASUREMENT", OR "WARPAGE MEASUREMENT", AVAILABLE UPON REQUEST.
- STAINLESS STEEL AND ALUMINUM CONSTRUCTION FOR EASY CLEANING AND RESISTANCE TO SOLVENTS AND AGGRESSIVE LIQUIDS.
- UV BLACK LIGHT FOR INSPECTION AND WHITE LED LIGHT FOR PROGRAMMING.
- FLEXIBLE, ROBUST AND PRECISE GANTRY SYSTEM WITH A BALL-SCREW MOTION AND SERVO MOTORS ENSURING LONG-TERM RELIABILITY.
- WIDE RANGE OF VALVES AVAILABLE FOR COATING, GASKETING, FILLING, AND OTHER DISPENSING APPLICATIONS.



CONFORMAL COATINGS, ACRYLICS, URETHANES, SILICONES, RTV, BI-COMPONENT MATERIALS, ETC.



CoatFlow

www.coatflow.com

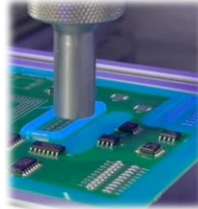
SELECTIVE CONFORMAL COATING AND DISPENSING SOLUTIONS

CF440 LC VALVES RANGE

RELIABLE, ACCURATE AND EASY-MAINTENANCE SOLUTIONS

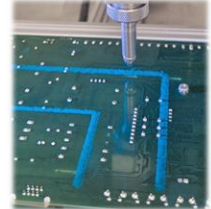
OUR EXCLUSIVE VALVE RANGE MEETS ALL REQUIREMENTS FOR DISPENSING CONFORMAL COATINGS AND ADHESIVES IN THE ELECTRONICS INDUSTRY.

APPLICATIONS INCLUDE:



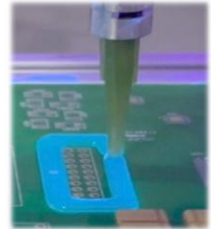
SELECTIVE COATING

PRECISION SPRAY TECH
PRECISION MICRO-SPRAY TECH



SELECTIVE COATING

FILM COATING TECHNOLOGY
NEEDLE COATING



HIGH-VISCOSITY SOLDER PASTES AND ADHESIVES

ROTARY DISPENSING
CAVITY PUMP DISPENSING



SPECIFIC ELECTRONICS PROCESS

UNDERFILLING
DAM AND FILL
POTTING

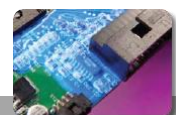
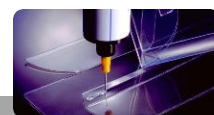


THIXOTROPIC MATERIALS

GASKETING
DAM AND FILL
JETTING



CONFORMAL COATINGS, ACRYLICS, URETHANES, SILICONES, RTV, BI-COMPONENT MATERIALS, ETC.



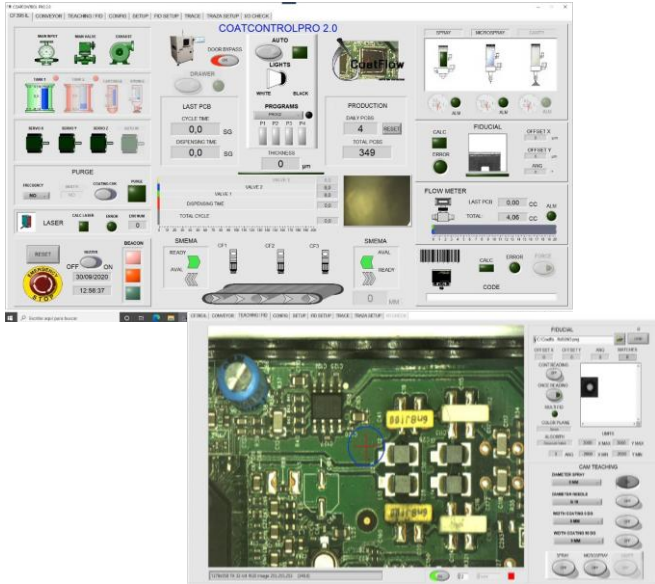
CoatFlow

SELECTIVE CONFORMAL COATING AND DISPENSING SOLUTIONS

CF395IL FEATURES

CONTROL SOFTWARE COATcontrolPRO 2 @

TOUCH-SCREEN SOFTWARE FOR COMPLETE CONTROL OF ALL SYSTEM PARAMETERS INCLUDING CONVEYOR, STOPPERS, DOORS, EMERGENCY SYSTEMS, TANK AND CARTRIDGE LEVELS, PRODUCTION CONTROL, MATERIAL CONSUMPTION PER BOARD AND REAL TIME SPRAY PRESSURE MONITORING.



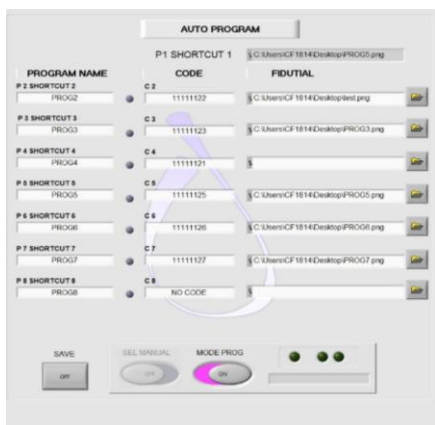
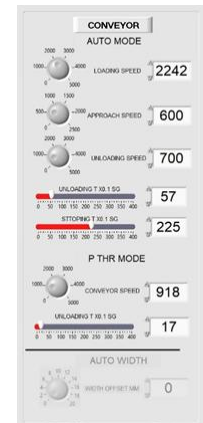
REAL-TIME DISPLAY INCLUDES :

- DAILY AND TOTAL CYCLE COUNT
- TOTAL CYCLE TIME AND DISPENSING TIME
- ALARM STATUS
- SERVO MOTOR AND DRIVER STATUS
- CONVEYOR, STOPPER AND REGISTER PINS STATUS
- TANKS, CARTRIDGES AND SYRINGES LEVELS
- VALVES STATUS
- LOW PRESSURE AND SPRAY VALVE ALARM.
- **FLOW METER DATA**
- PURGING AND CALIBRATION PROCESSES
- WEIGHT CONTROL SYSTEM
- LASER FAN CONTROL
- SMEMA STATUS
- BLACK/WHITE LIGHT STATUS SWITCH
- PROGRAMMING / VISION CAMERAS
- FIDUCIAL PROCESS
- 1D / 2D BARCODE VALUES (OPTIONAL)

CHAIN CONVEYOR WITH STOPPERS. ADJUSTABLE SPEED BY SOFT.

VARIABLE SPEED SYSTEM THAT ALLOWS TO LOAD PCB'S IN HIGH SPEEDS AND DOWNLOAD TO SLOWER SPEEDS TO ENSURE TRANSPORTATION WITHOUT VIBRATIONS OR JUMPS IN PCB'S ALREADY COATED. VERY SLOW SPEED OF APPROACH TO STOPPERS, WHICH ALLOWS A STOP OF PRECISION WITH AN ERROR IN CLOSE TO 0 (MAX +- 100 MICRONS) IN PCB PLACEMENT.

ALL SPEEDS ARE CONFIGURABLE BY THE USER.



AUTOMATIC PROGRAM SELECTION BASED ON 1D/2D CODE (NOT INCLUDED)

THIS OPTION ALLOWS TO AUTOMATE THE PRODUCTION IN CASE OF HAVING SEVERAL REFERENCES IN PRODUCTION AT THE SAME TIME.

THE SYSTEM WILL READ THE QR OR DATAM CODE AND COMPARE IT WITH THE PRE-ASSIGNED CODES, LOADING AND EXECUTING IN REAL TIME THE SPECIFIC COATING PROGRAM FOR THAT BOARD.

EACH PROGRAM MAY BE ASSIGNED AN INDEPENDENT FIDUCIAL CHECK PATTERN.

CONFORMAL COATINGS, ACRYLICS, URETHANES, SILICONES, RTV, BI-COMPONENT MATERIALS, ETC.

CoatFlow



SELECTIVE CONFORMAL COATING AND DISPENSING SOLUTIONS

CF395IL INLINE COATER AND DISPENSER SYSTEM

GENERAL SPECIFICATIONS INCLUDED

MOTION:

- BALL SCREW DRIVEN BY SERVO MOTORS
- X, Y SPEED: 0 TO 900 MM/SG
- Z SPEED: 0 TO 900 MM/SG
- POSITIONAL ACCURACY: 0.005 MM
- POSITIONAL PRECISION: 0.01 MM

WORKING AREA:

- STANDARD FOR 1 VALVE 500X500X100 MM (INCLUDING PARK AND PURGE CUPS).
- FOR 2 OR 3 VALVES IT IS NECESSARY CONFIRMATION ABOUT FINAL WORKING AREA. AREA MAY VARY DEPENDING ON VALVE CONFIG. TEACHING CAMERA THE PROGRAMMING AREA IS REDUCED DEPENDING ON THE VALVE CONFIGURATION (ASK ABOUT FINAL AREA)

CONVEYOR

- WIDTH ADJUSTABLE FROM 50 TO 500 MANUALLY BY HAND CRANK OR AUTOMATIC BY SOFT (OPTIONAL)
- CHAIN BOARD CLEARANCE BY DEFAULT 5 MM (OTHER PIN LENGTHS AVAILABLE)
- COMPONENT CLEARANCE UP TO 80 MM (BELOW AND ABOVE) 120 MM OPTIONAL
- SMEMA COMMUNICATION FROM UPPER AND LOWER MACHINES
- STOPPERS INCLUDED. REGISTERING PINS (OPTIONAL)

WORKING MODES

- CONTINUOUS (ADJUSTABLE SPEED FROM 0.02 TO 2.0 M/MIN)
- PASS THROUGH
- DOUBLE STOP (OPTIONAL)

CONTROL

- TOUCH SCREEN

SOFTWARE

- COATCONTROL PRO 2.X @ INCLUDED
- PATHCOAT @ OFFLINE (OPTIONAL)

ACCESSORIES INCLUDED

- AUTOMATIC PARK AND PURGE SYSTEM
- AUTOMATIC CONTROL OF VALVE PARAMETERS
- 4TH-AXIS TILT IN NEEDLE OR MICROSPRAY VALVES
- PROGRAMMING CAMERA INTEGRATED WITH COATCONTROLPRO 2.X
- PROGRAMMABLE MARK FIDUCIAL SYSTEM
- THREE-COLOURS AND BUZZER LIGHT TOWER
- 10 LITRES PRESSURE TANK WITH LOW LEVEL SENSOR SCALE TYPE
- 6 OZ-CARTRIDGE FOR PURGING SYSTEM
- SYRINGES ADAPTER 30 AND 55 CC

VALVES CONFIGURATION

- UP TO 6 VALVES: PRECISION SPRAY, MICROSPRAY, NEEDLE, ROTARY ETC.

POWER SUPPLY

- 110/230V 1 PHASE. 10A MAX

SECURITY

- EMERGENCY BUTTON
- SECURITY INTERLOCKS IN DOORS
- EXHAUST PUMP SENSOR
- SPRAY SENSOR CONTROL

CERTIFICATION

- CE & SMEMA

OPTIONAL EQUIPMENT

- 4TH-AXIS HEAD ROTATION
- **FLOW METER**
- AUTOMATIC COATING WIDTH CONTROL (FILM VALVE)
- DOUBLE STOP CONVEYOR MODULE
- SOFT CONTROLLED CONVEYOR WIDTH ADJUSTMENT
- TRACEABILITY MODULE WITH BARCODE READER (CAM).
- AUTOMATIC PROGRAM SELECTION VIA BARCODE
- HEATING SYSTEM IN TANKS AND HOSES
- AUTOMATIC NEEDLE CALIBRATION. X, Y AND Z
- PRECISION WEIGHT CONTROL SYSTEM
- VALVES DUPLICATION FOR REDUCED CYCLE TIME
- MULTILINGUAL SOFTWARE
- AUTOMATIC SOLVENT RECIRCULATION SYSTEM

- PRESSURE TANKS (2 TO 30)
- CARTRIDGE RETAINER (2.5, 6, 8, 12 AND 20 OZ)
- LOW LEVEL SENSORS
- SYRINGES ADAPTOR (3, 5, 10, 30 AND 55 CC)



CoatFlow

AN INNOMELT BRAND

COATFLOW Solutions

Protecting your success

More INFO

INNOMELT Spain