

SELECTIVE CONFORMAL COATING AND DISPENSING SOLUTIONS

COATING VALVES

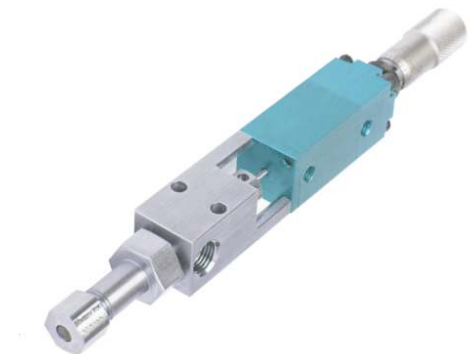


COATING VALVE CFCV10 FILM

Coating valves are designed for precise application of low viscosity materials. These valves are designed for applications in which the application speed of the conformal coating is a fundamental parameter. The external control of the stroke of the piston makes it very easy for the operator to precisely adjust the flow of material. Total control of the coating cycle is achieved by adjusting the material flow and precise control in the pre-dispensing and coating provided by the **Coatflow** dispensing and coating systems. Maintenance is simplified by eliminating the annoying springs that wrap around the needle. Downtime is minimized by simply replacing a seal / seal during routine maintenance. The compact design and mounting holes allow for easy integration into automated applications.

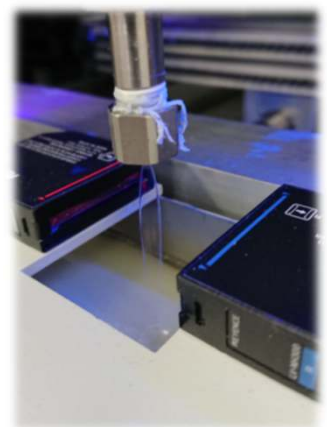
FEATURES

- Airless technology with better edge definition
- Different coating nozzles for variable flow rates
- Uniform coverage with curtain
- Application of thicknesses at high speeds
- Avoid the appearance of bubbles
- Avoid excessive application of materials
- Correct closing of material flow (does not drip)
- Adjustable material flow control with micrometer
- Long useful life



CFCV10 FILM

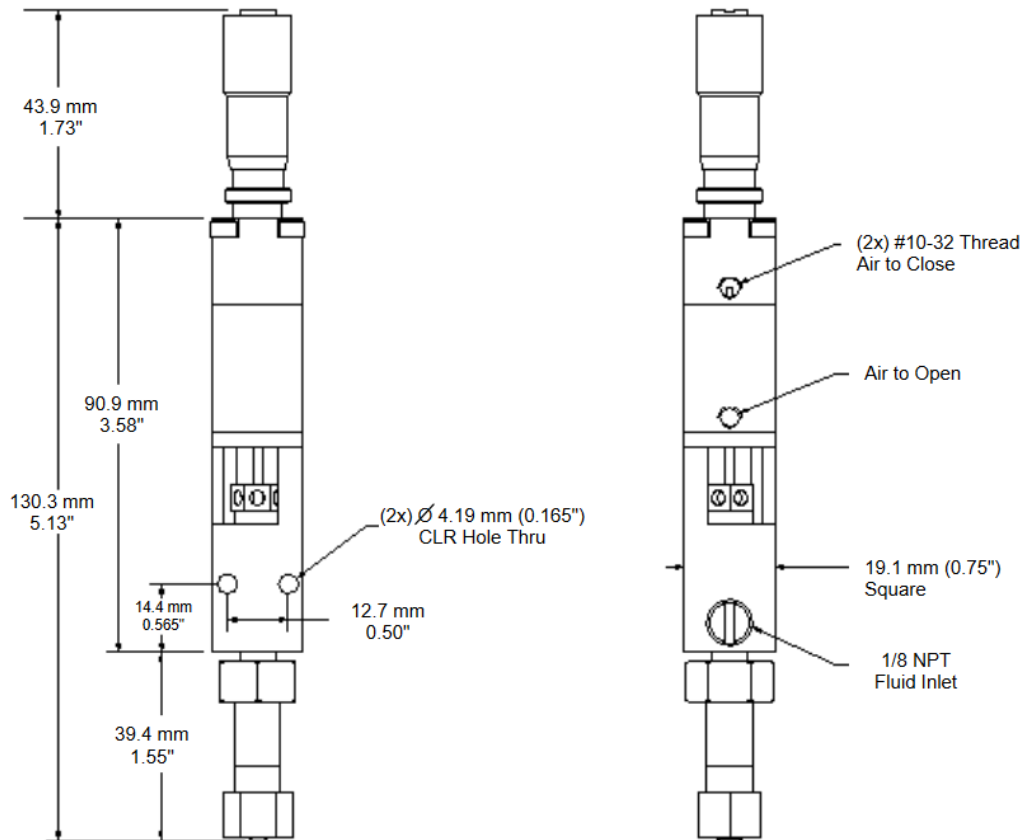
Size W x L x H:	19mm x 174mm
Weight:	170g
Fluid Inlet:	1/8" NPT
Mounting:	FLAT NOZZLE
Maximum Fluid Pressure:	3000 psi (205 Bar)
Wetted part:	Stainless steel, teflon, kalrez,
Cycle Rate:	Exceeds 400 cycles/minute
Material Viscosity Range:	1 - 100cps



MATERIALS: CONFORMAL COATINGS, ACRYLICS, URETHANES, SILICONES, RTV, BI-COMPONENT MATERIALS, ETC.



COATING VALVE CFCV 10 FILM SPECIFICATIONS



INTERNATIONAL SALES DEPARTMENT

TEL. +34 925 258 073
 FAX +34 925 581 457
 coatflow@coatflow.com
www.coatflow.com
www.innomelt.com

LOCAL DISTRIBUTOR:

OTHER COATFLOW SOLUTIONS

